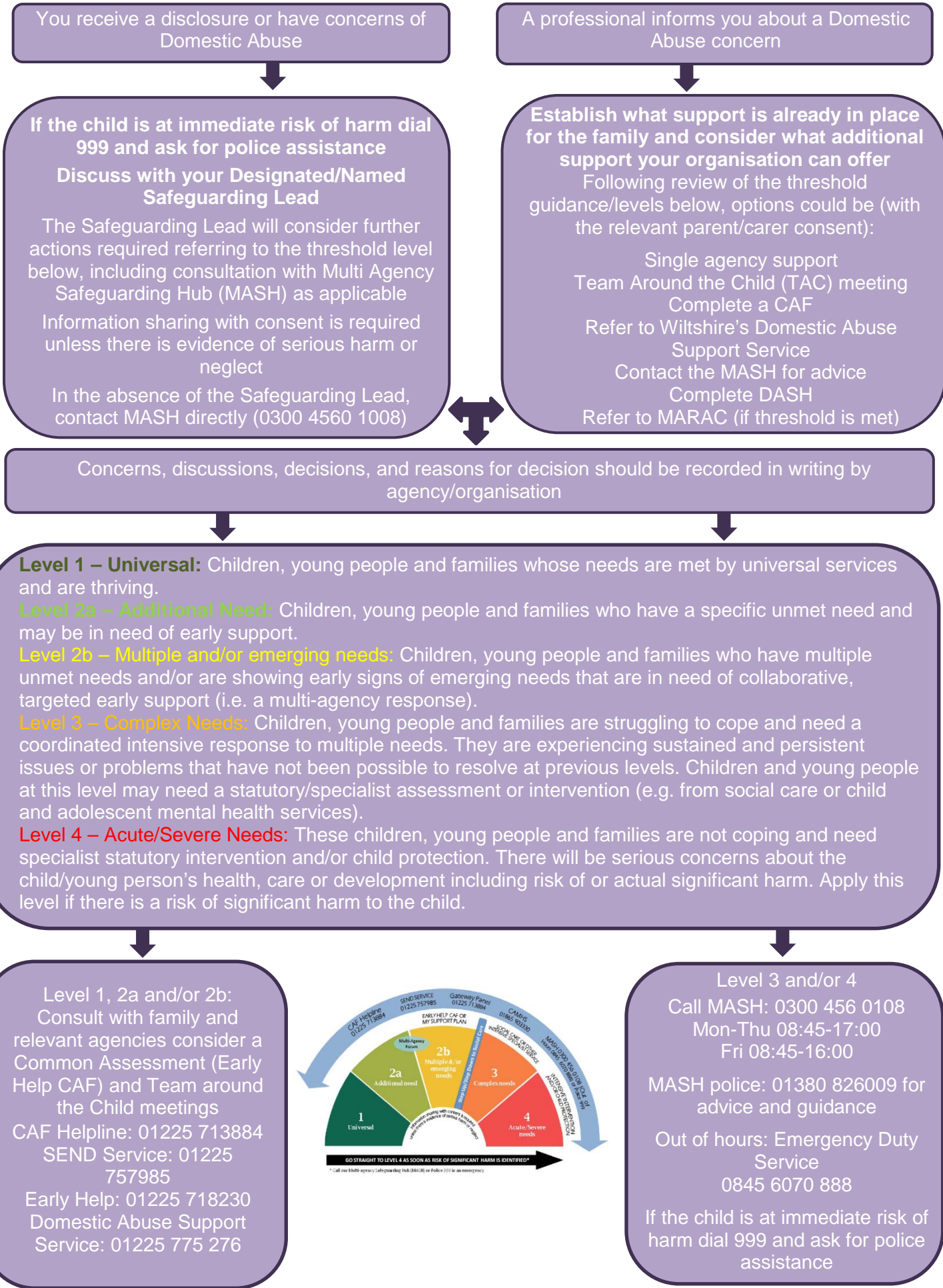


Children affected by Domestic Abuse WSCB Practice Guidance for professionals



Wiltshire Safeguarding
Children Board



You receive a disclosure or have concerns of Domestic Abuse

A professional informs you about a Domestic Abuse concern

If the child is at immediate risk of harm dial 999 and ask for police assistance
Discuss with your Designated/Named Safeguarding Lead

The Safeguarding Lead will consider further actions required referring to the threshold level below, including consultation with Multi Agency Safeguarding Hub (MASH) as applicable

Information sharing with consent is required unless there is evidence of serious harm or neglect

In the absence of the Safeguarding Lead, contact MASH directly (0300 4560 1008)

Establish what support is already in place for the family and consider what additional support your organisation can offer

Following review of the threshold guidance/levels below, options could be (with the relevant parent/carer consent):

- Single agency support
- Team Around the Child (TAC) meeting
- Complete a CAF
- Refer to Wiltshire's Domestic Abuse Support Service
- Contact the MASH for advice
- Complete DASH
- Refer to MARAC (if threshold is met)

Concerns, discussions, decisions, and reasons for decision should be recorded in writing by agency/organisation

Level 1 – Universal: Children, young people and families whose needs are met by universal services and are thriving.

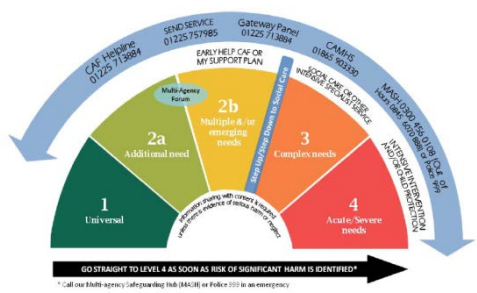
Level 2a – Additional Need: Children, young people and families who have a specific unmet need and may be in need of early support.

Level 2b – Multiple and/or emerging needs: Children, young people and families who have multiple unmet needs and/or are showing early signs of emerging needs that are in need of collaborative, targeted early support (i.e. a multi-agency response).

Level 3 – Complex Needs: Children, young people and families are struggling to cope and need a coordinated intensive response to multiple needs. They are experiencing sustained and persistent issues or problems that have not been possible to resolve at previous levels. Children and young people at this level may need a statutory/specialist assessment or intervention (e.g. from social care or child and adolescent mental health services).

Level 4 – Acute/Severe Needs: These children, young people and families are not coping and need specialist statutory intervention and/or child protection. There will be serious concerns about the child/young person's health, care or development including risk of or actual significant harm. Apply this level if there is a risk of significant harm to the child.

Level 1, 2a and/or 2b:
 Consult with family and relevant agencies consider a Common Assessment (Early Help CAF) and Team around the Child meetings
 CAF Helpline: 01225 713884
 SEND Service: 01225 757985
 Early Help: 01225 718230
 Domestic Abuse Support Service: 01225 775 276



Level 3 and/or 4
 Call MASH: 0300 456 0108
 Mon-Thu 08:45-17:00
 Fri 08:45-16:00
 MASH police: 01380 826009 for advice and guidance
 Out of hours: Emergency Duty Service
 0845 6070 888
 If the child is at immediate risk of harm dial 999 and ask for police assistance